



Good for business. Good for the planet.



Get Some Juice On Your Crops

PlantJuice™ is a powerful biostimulant that supports farmers to produce better crops. It's uniquely produced from green macroalgae sustainably grown and harvested in North Queensland.

Enriched with powerful growth-promoting hormones such as auxins and cytokinins, as well as a range of macro and micro nutrients, **PlantJuice™** helps plants to establish quicker, resist stress and ultimately sets the foundation for better yield and returns.

"I have worked with liquid fertilisers and seaweed products for some years, but have never had the opportunity to recommend and sell such a sustainable, renewable and effective seaweed product as PlantJuice™.

Luke Hargreaves

Sales Agronomy at LiquaForce Australia



Backed by science and sustainably made

PlantJuice™ has been developed in conjunction with our partners at James Cook University and has been scientifically proven to enhance plant health.

The green macroalgae we harvest comes from our very own aquaculture operations, where it's used to extract nutrients from water before they are released into the environment.

It's a closed-loop system that's better for the planet, especially compared to wild-harvest and beach-cast collected products.

PlantJuice™ Hormone Profile

Hormone Profile	Quantity	Unit
Auxins (IAA)	295	ng/g FW
Cytokinins (iP + iPR + c-Z + c-ZR)	4.3	ng/g FW
Gibberellins (GA3)	2	ng/g FW
Abscisic acid (ABA + t-ABA)	19	ng/g FW
Ethylene (ACC precursor)	12	ng/g FW
Salicylic acid (SA)	146	ng/g FW

PlantJuice™ Advantages



Highly Nutritious

Enriches crops with nutrients and hormones that can help plants grow stronger, faster and produce superior fruit.

Protective

Provides a buffer against the stress of excess heat and drought as well as herbicide and fungicide applications.

Versatile

Can be applied via a range of processes such as fertigation, drip, foliar and trickle.

Promotes Soil Health

Improves soil ecology, including the ability to retain water and efficiently use nutrients.

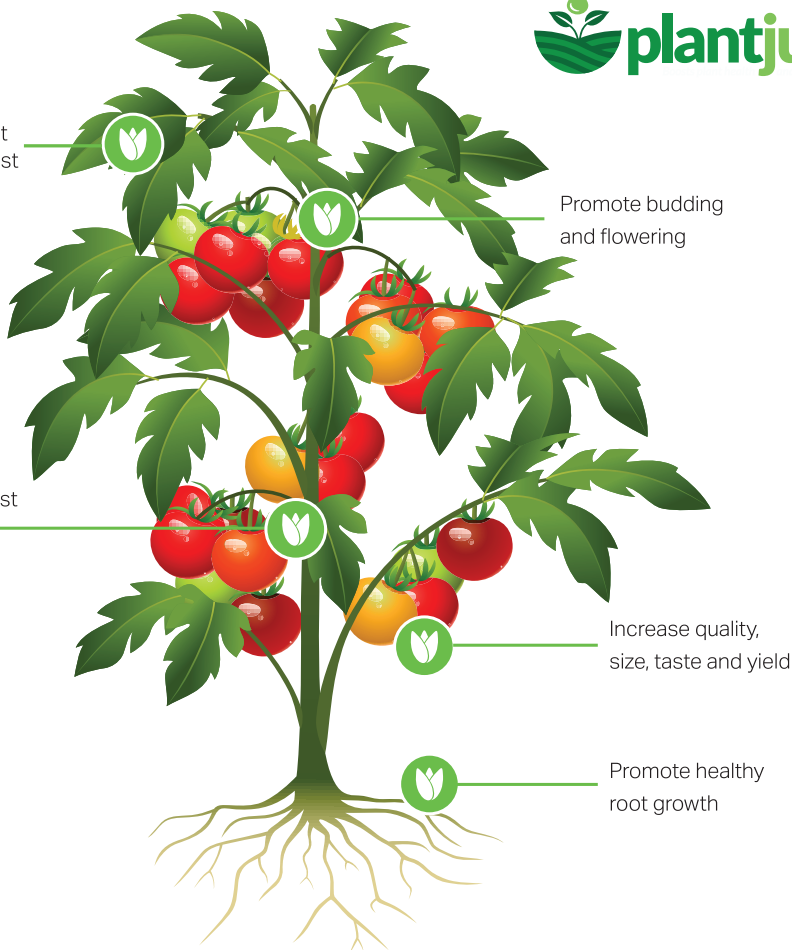
Minimise effect of heat and frost

Promote budding and flowering

Strengthen cell walls against insect and fungal attack

Increase quality, size, taste and yield

Promote healthy root growth



Nutrient Analysis

Composition	Quantity	Unit
Total Solids	5.1	% w/v
Total Organic Matter	2.1	% w/v
Total Mineral Content	3.0	% w/v
Total Suspended Solids	156	mg/L
pH	12.3	units
Electro-Conductivity	41.2	mS/cm
Specific Gravity	1.03	-
Alkalinity	6,160	mg CaCO ₃ /L
Filtration	100	microns
Appearance	Dark green liquid with seaweed-like odour	
Elemental Profile	Quantity	Unit
Nitrogen (N)	0.2	%
Phosphorus (P)	0.01	%
Potassium (K)	1.4	%
Boron (B)	4	mg/L
Calcium (Ca)	35	mg/L
Cobalt (Co)	0.35	mg/L
Copper (Cu)	0.40	mg/L
Iron (Fe)	8	mg/L
Magnesium (Mg)	149	mg/L
Manganese (Mn)	24	mg/L
Molybdenum (Mo)	0.13	mg/L
Sodium (Na)	2,230	mg/L
Sulphur (S)	2,620	mg/L
Zinc (Zn)	0.45	mg/L

*This is a typical analysis of product. Small variations in profile can occur

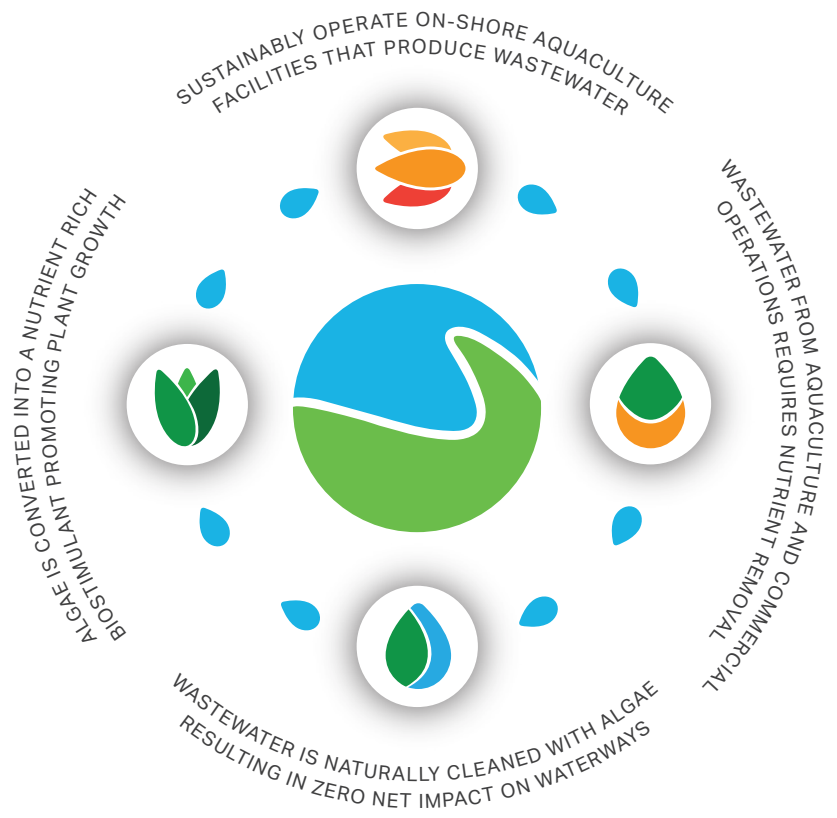


We're focused on addressing the global issues of water purity and food security using nature, science and a fresh approach.

Pacific Bio is an Australian biotech company that is setting a new standard in sustainable aquaculture and wastewater management.

Our proprietary technology uses macroalgae to strip wastewater of environmentally harmful pollutants before they enter the ecosystem and is applied in a range of settings. We also use this breakthrough technology to create nutrition products for plants and animals.

Based in Australia with offices in Melbourne, Townsville and throughout North Queensland, we employ a talented team with broad-ranging expertise, and our work is deployed locally and around the world. We tackle new challenges openly and creatively and look forward to expanding our positive impact.



Pacific Biotechnologies Limited
ACN 117 957 383

ALMA Complex | 8/663 Victoria Street
Abbotsford 3067 Australia

www.plantjuice.com.au
info@plantjuice.com.au
Ph. 1300 457 941